

PART OF THE SW. & SE. 1/4 , OF SECTION 6, & THE NW. & NE. 1/4, OF SECTION 7 T.6N., R.2E., S.L.B. & M. 172

SKY RANCH

IN WEBER COUNTY

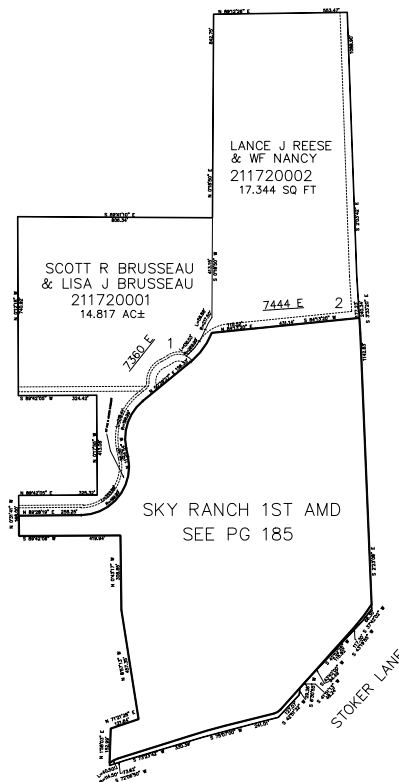
TAXING UNIT: 520

SCALE 1" = 400'

SEE PAGE 5

SEE PAGE 137

SEE PAGE 6



SEE PAGE 9

10' UTILITY & DRAINAGE EASEMENTS EACH
SIDE OF PROPERTY LINES AS INDICATED
BY DASHED LINES EXCEPT AS OTHERWISE
SHOWN.

FOR COMPLETE SURVEY DATA SEE
ORIGINAL DEDICATION PLAT IN
BOOK 93, PAGE 27-28 OF RECORDS.